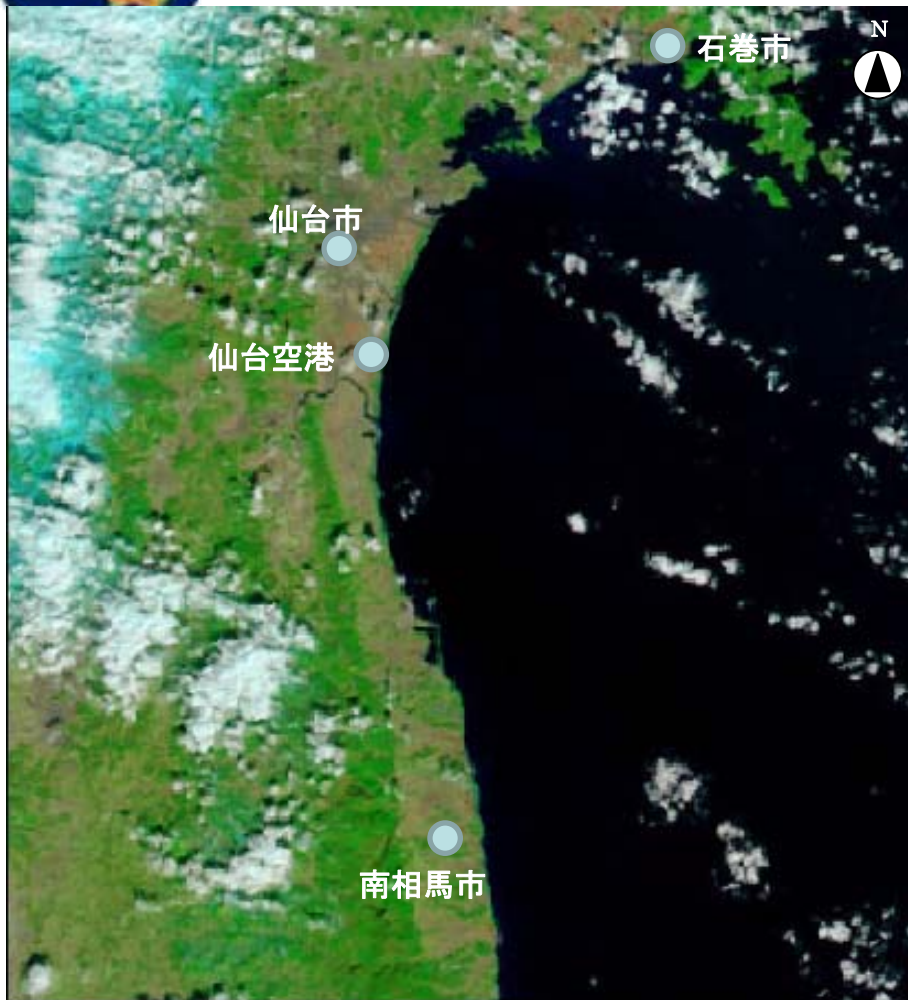




宮城県・福島県 津波被害



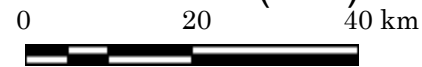
災害前

TERRA/MODIS 2011/02/26 AM10:20(JST)



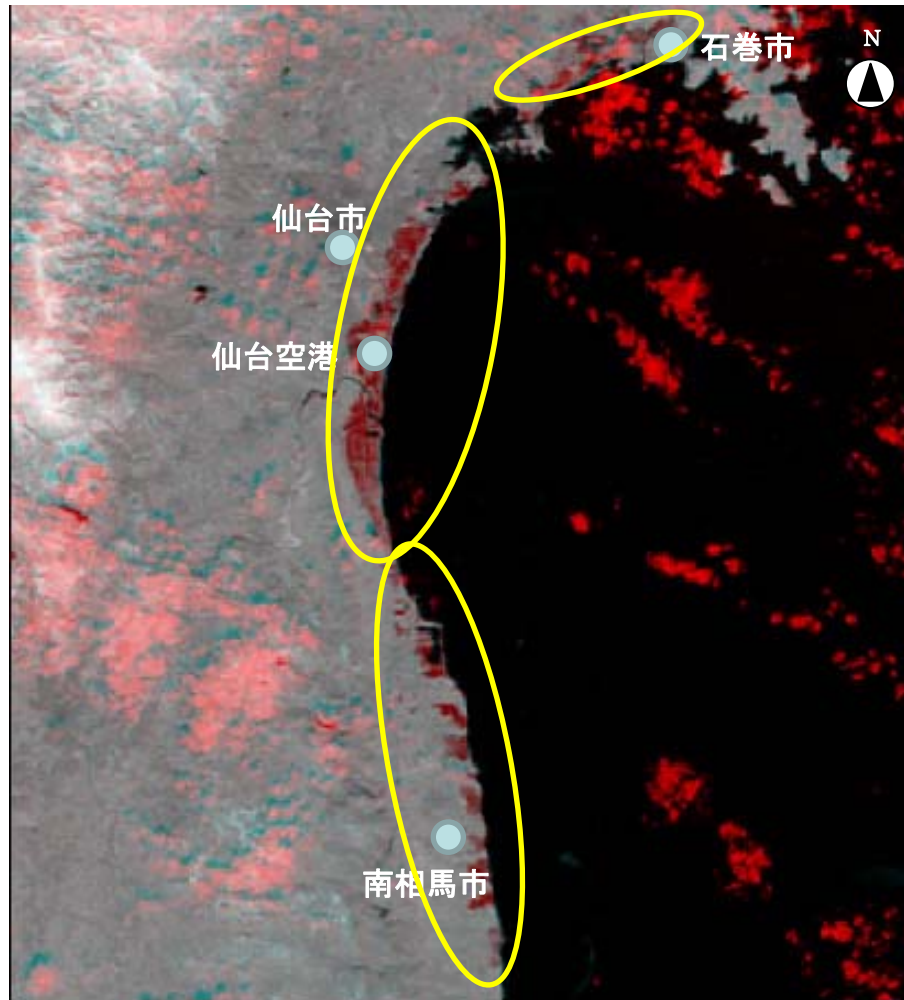
災害後

AQUA/MODIS 2011/03/13 AM10:30(JST)



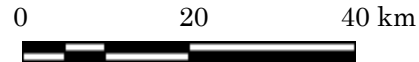


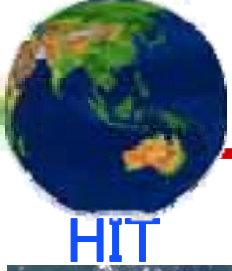
宮城県・福島県 津波被害



災害前後の合成画像

R:2011/02/26 IR, G&B: 2011/03/13 IR





青森県八戸市



災害前
ALOS/AVNIR-2 2010/08/23



災害後
COSMO-SkyMed 2011/03/12

